



ALIGNING SYSTEMS FOR HEALTH

Health Care + Public Health + Social Services

Community-Led Aligning Toolkit: Translating Insights into Actionable Tools for Shifting Power Dynamics

May 6, 2026

Aligning Systems Team

Agenda

- Welcome Activity
- History of Aligning
- Toolkit Foundations & Community Focus
- Review - *Community-Led Aligning Toolkit: Resources for Collaborative Work*
- Reflections

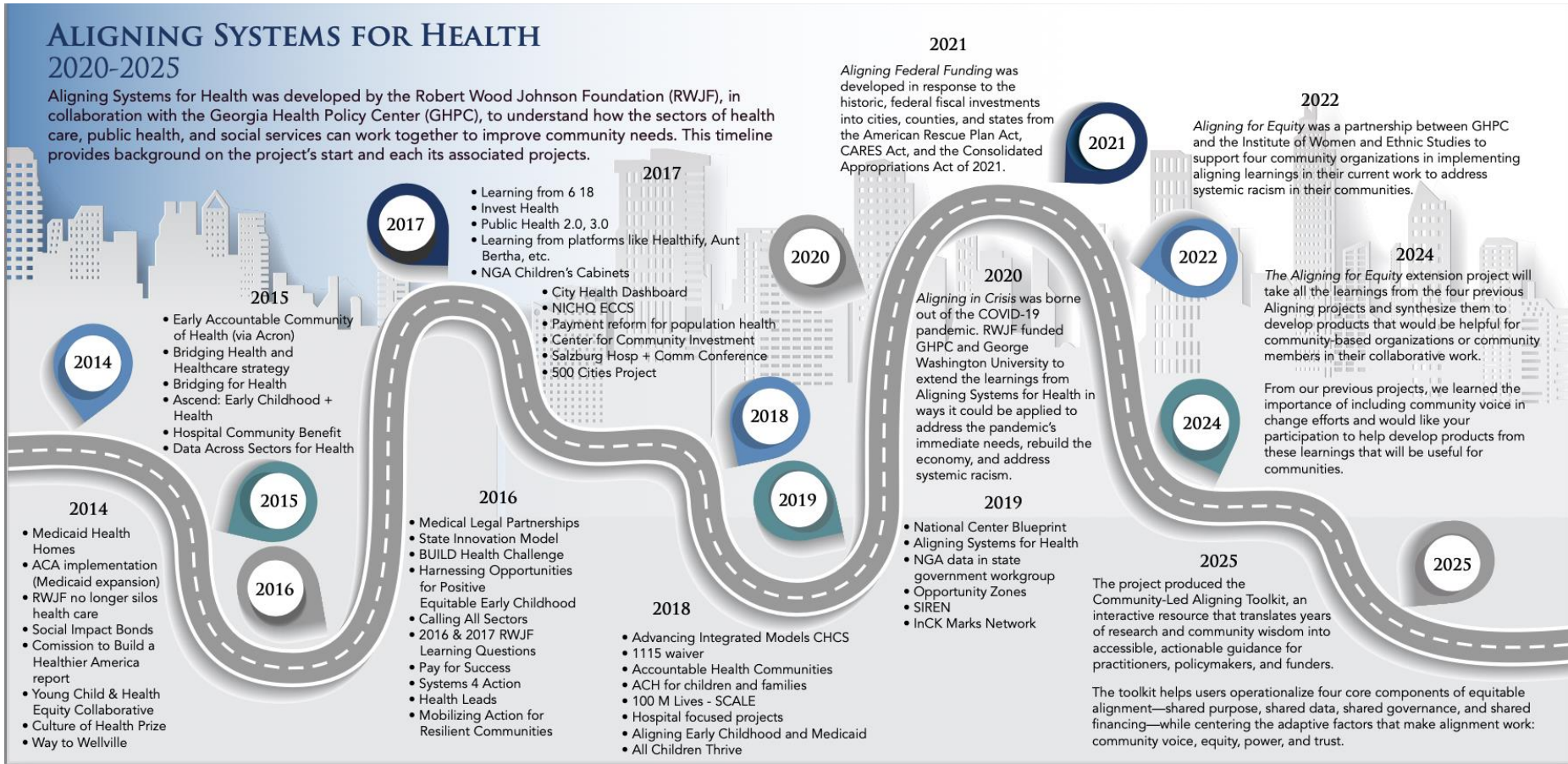
Welcome

- How are you collaborating with communities in your work?
- Please drop your response in the chat.

Aligning Timeline

ALIGNING SYSTEMS FOR HEALTH 2020-2025

Aligning Systems for Health was developed by the Robert Wood Johnson Foundation (RWJF), in collaboration with the Georgia Health Policy Center (GHPC), to understand how the sectors of health care, public health, and social services can work together to improve community needs. This timeline provides background on the project's start and each its associated projects.



Toolkit Foundations

- Culmination of GHPC's multi-year Aligning Systems for Health initiative, supported by RWJF
- Builds on prior phases
 - *Aligning Systems for Health, Aligning Federal Funds, Aligning in Crisis*
- Focuses on aligning systems equitably by addressing power, equity, trust, and community voice
- Helps users operationalize four components
 - Shared Purpose, Shared Data, Shared Governance, Shared Financing.
- Community-Led Aligning Toolkit: Resources for Collaborative Work
 - Published Dec. 4, 2025
 - PDF + interactive version available

Community Partnership



Community Focus

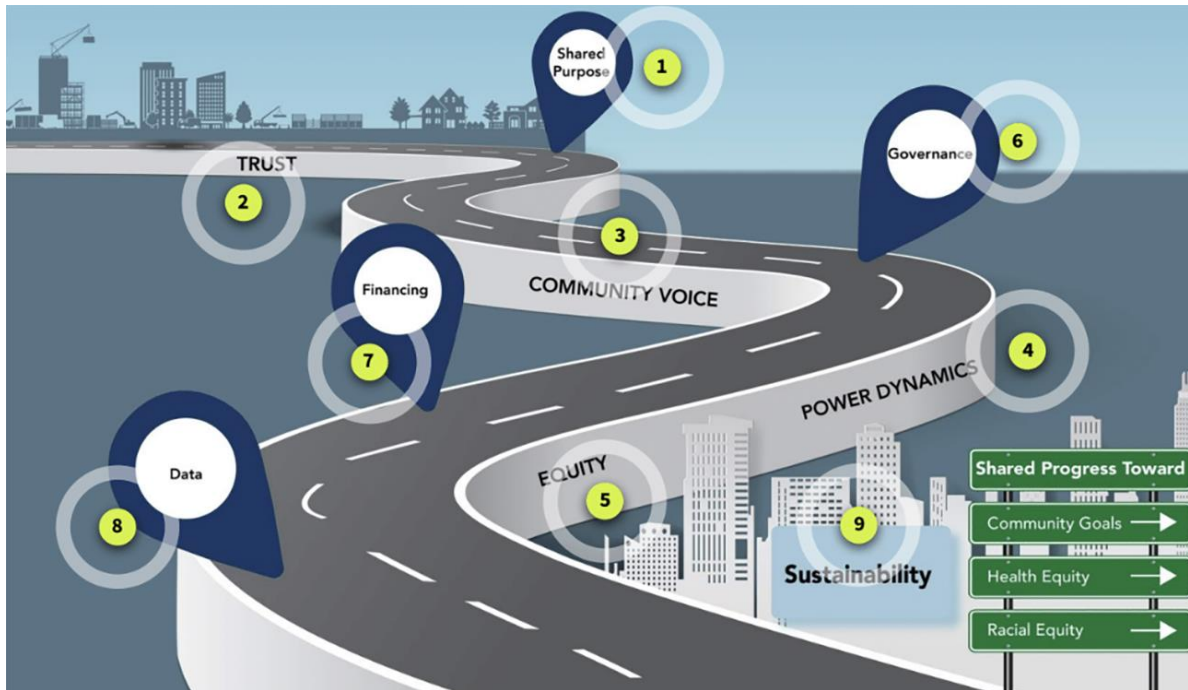


Developed through deep engagement with community organizations, funders, and institutions.



Reinforces that sustainable alignment requires shared accountability and authentic collaboration.

Community-Led Aligning Toolkit: Resources for Collaborative Work



Link to the toolkit:
[Community-Led
Aligning Toolkit:
Resources for
Collaborative
Work](#)

Reflection

- How could you see your organization using the toolkit?

ALIGNING SYSTEMS FOR HEALTH

Health Care + Public Health + Social Services



Questions / Feedback?

Thank you!

Please reach out with any questions or feedback to:

Aliza Petiwala - apetiwala@gsu.edu